

Welcome to Aston University and School of Languages and Social Sciences

EXCELLENT
DIFFERENT
DISTINCTIVE
ASTON



Contents

- ▶ About Aston University
- ▶ Welcome from Professor Alec Cameron, Vice-Chancellor & Chief Executive
- ▶ University values and staff expectations
- ▶ About the School of Languages and Social Sciences

Founded in 1895 and a University since 1966, Aston is a long established research-led University known for its world-class teaching quality and strong links to business and the professions. Professor Alec Cameron became Vice-Chancellor of the University in 2016, building on a strong legacy left by the Baroness Brown of Cambridge.

Outstanding graduate employability

Aston has been a leading university for graduate employment success for over 25 years. More than 80% of Aston graduates go on to a graduate level job within six months. The majority of Aston students choose to take an integrated placement year or year abroad, making them very attractive to employers. We have strong relationships with national and international graduate employers, as well as smaller and local employers. These relationships are extremely important and make a real contribution to graduate employability.

Career focussed programmes

Aston's close and established links with business, the public sector and the professions ensure that our career focussed degree programmes are inspiring, challenging and constantly updated to equip students with essential work-related skills and experiences.

Excellence in teaching and research

We are committed to high quality teaching and academic excellence, ensuring we provide the highest standard of education to our students. Aston has an excellent reputation for research which shapes and improves lives. We're proud of the quality of our research and the real world applications developed as a result – it makes a substantial and beneficial difference to people, organisations and society.

Aston's four academic Schools offer a range of undergraduate and postgraduate degree programmes, and also work with the public and private sectors to develop tailored Foundation Degree programmes.

International

Aston University is a popular choice for international students. We recognise and welcome the important academic contribution and cultural diversity international students bring to our university environment. Students from over 120 countries study at Aston University each year

Aston University is ranked 29th in the world and 9th in the UK as one of the 'most international universities in the world.' (The Times Higher World University Ranking, 2016-17).

Birmingham – one of Europe's liveliest cities

Birmingham is internationally recognised as a leader in leisure, entertainment, shopping and sport. It is an international centre for business, commerce and industry, housing numerous UK and overseas banks and law firms. Birmingham attracts 25 million visitors each year and contributes billions to the national economy through manufacturing and engineering.

The University campus is located in the city centre making it very accessible to an extensive network of motorways and railways.

A green, sustainable campus

Located in the heart of a vibrant city, our 40 acre campus houses all the University's academic, social and accommodation facilities for our 14,355 students. All staff have the opportunity to contribute to our sustainability agenda and practices.



Welcome from Professor Alec Cameron, Vice-Chancellor & Chief Executive

Dear applicant

The HE sector is currently experiencing an unprecedented scale and pace of change, combined with a high degree of ambiguity and uncertainty. Those universities able to adapt swiftly to a changing and increasingly competitive market will thrive. As a mid-sized, focused university Aston has the advantages of agility, innovation and team working that some other institutions do not. Our integrated placement year, our applicable, exploitable research, and our commitment to widening participation all help to make Aston distinct.

The 2014 Research Excellence Framework results recognised the quality and impact of Aston research. This research directly influences medical breakthroughs, advancements in engineering, innovation, policy and practice in government, and the strategies and performance of local and international business. The Times Higher Education REF rankings placed Aston University 35th in the UK and 78% of our submissions were judged to be World Leading or Internationally Excellent.

Teaching quality and the student experience are an important focus at Aston. We are committed to doing all we can to address the needs of students and to assisting them to achieve their career ambitions on graduation.

We very much look forward to receiving your application and learning more about how you would contribute to Aston's continuing success.

A handwritten signature in blue ink that reads "Alec Cameron."

Professor Alec Cameron
Vice-Chancellor & Chief Executive

► University values

All staff are expected to demonstrate / promote the University's values and expectations, which are an integral part of our 2020 strategy and underpin the culture of the University. Our vision is to be the UK's leading University for business and professions, where original research, enterprise and inspiring teaching deliver global impact. More information about the university's values is available at www.aston.ac.uk/staff/working/dare-to-succeed/values/

In addition, our leaders are expected to be accountable, help to execute strategic visions of the University, share and set clear expectations that inspire those around them. Further information on our leadership expectations can be found at: <http://www.aston.ac.uk/EasySiteWeb/GatewayLink.aspx?allId=158042>



► Staff expectations

All staff are expected to;

- Be committed to delivering high performance
- Recognise and praise the high performance of others
- Remain open to new ideas and seek to act quickly for positive change
- Develop themselves, and support the development of others
- Be ambitious, for themselves, their teams and the university
- Engage with others, listen, observe and communicate
- Focus on excellent customer service, finding solutions and saying “yes”
- Make reasoned decisions without fear of blame
- Engender trust through their own actions
- Be fair in all matters

► The School of Languages and Social Sciences

The School of Languages and Social Sciences at Aston University is one of only a handful of unified academic units in the UK to span both the Humanities and Social Sciences. In doing so, it draws on a rich and distinguished tradition of teaching, scholarship and research. During the 1970s and 1980s, the Department of Modern Languages (French, German, Linguistics), as it was then known, was one of the UK's pioneers of the study of language in contemporary society. In 1998, reflecting the growing interest in Europe, it became the School of Languages and European Studies. In 2004, we adopted our current title.

Since then, the School has grown rapidly in student numbers and in its academic coverage. New single honours undergraduate degrees were introduced in Politics and International Relations (2005), Sociology (2007), English Language (2008) and Spanish (2012). Today, the School comprises four Departments: English, Languages and Translation Studies, Politics and International Relations and Sociology / Policy. The academic Departments are supported by a School Office.

This combination of subjects and the way they relate to each other is almost unique in British Higher Education and leaves the School ideally-placed to investigate how language and society function, both in their own context and in relation to each other. A particular opportunity for the future will be the exploitation of interdisciplinary perspectives on this question.

Our subject groups enjoy a strong reputation, both among students and our peers:

In 2017, Aston was awarded Gold in the Teaching Excellence Framework (TEF)

In the 2017 National Student Survey (NSS), the School had an overall satisfaction rate of 90 per cent; on this measure, Sociology and Policy scored 87 per cent, Politics and International Relations 93 per cent, English 96 per cent, French 92 per cent, German 95 per cent and Spanish 97 per cent.

In the 2018 Guardian League Tables, Aston is ranked 32nd for English, 28th for Sociology, 20th for Social Policy, 42nd for Modern Languages and 65th for Politics.

In 2017, the Department of Sociology and Policy won the University's Excellence Award for Teaching. This comes on top of winning the 'Excellence in Teaching Sociology' Award of the British Sociological Association and the Higher Education Academy in 2013.

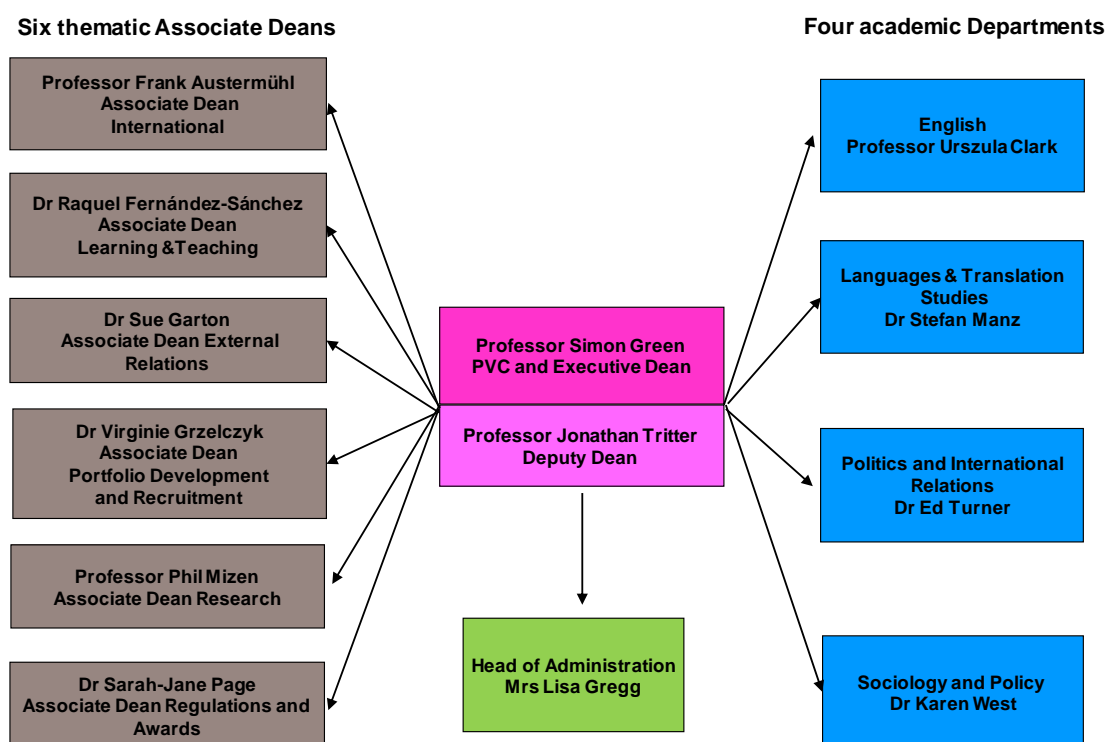
In [REF 2014](#), the School's submission to the Area Studies subpanel was rated 3rd out of 23 institutions in the UK in terms of percentage 3*/4* research. The submission to the Modern Languages and Linguistics subpanel did particularly well in the area of research impact and places Aston within the top 10 institutions for that measure.

When combined with financially sound foundations, the School is therefore in a strong position. It has an ambitious strategy for the next five years, which structures its activities around three key beneficiaries: students, region and society as well as business and professions. In particular, we are focusing on developing further the student experience, including around placements and employability. A core element of this strategy is the addition of new programme areas to the School's portfolio: we began offering a half degree in English Literature in 2017-18, and will add a half degree in History for 2018-19.

The School is a collegiate and supportive environment, with a strong culture around valuing both teaching and research equally highly. We are proud of our diversity: around two-thirds of our staff are female and there are some 18 nationalities represented in our School. We have a well-developed structure for personal development and review and are bidding for Athena SWAN accreditation during 2017-18.

Organisationally, the School is led by the Pro-Vice-Chancellor and Executive Dean, Professor Simon Green, along with a team of Associate Deans and the Heads of Department. Together, they and the Head of Administration constitute the School's Management Committee. The Departments are supported by an administrative team as well by a range of central services, who together manage a range of aspects of the School's work, including research, admissions, marketing, open days, student support, exams and timetabling. The School is further supported in its work by an Advisory Panel, whose membership is drawn from stakeholders and alumni in the city of Birmingham and beyond.

The School of Languages and Social Sciences, 2017-18



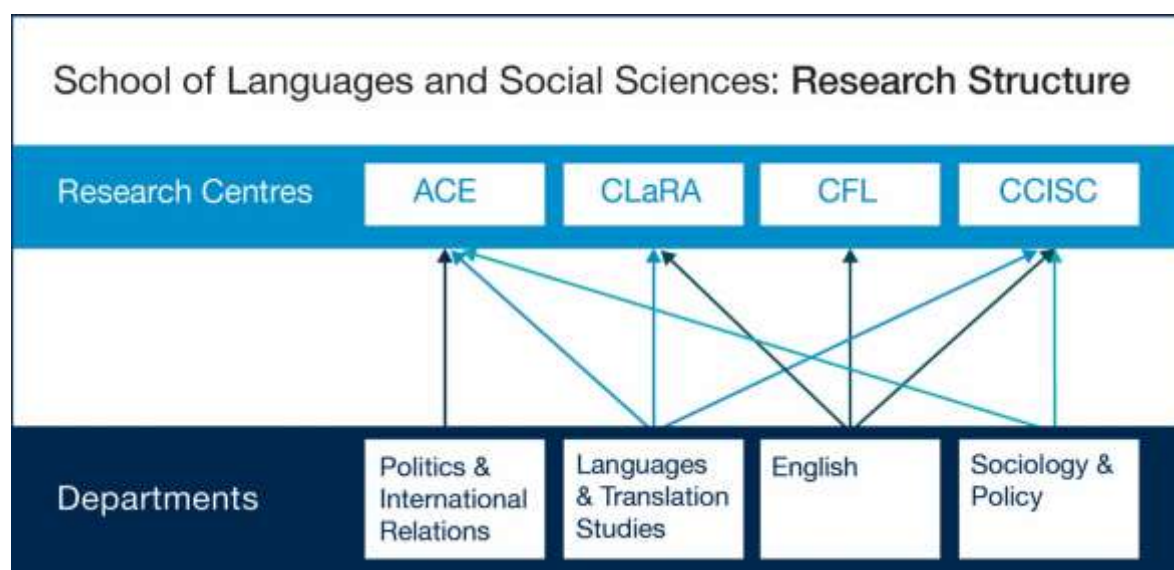
RESEARCH

Researchers in LSS are a multi-lingual, multi- and interdisciplinary community, working across the Humanities, Arts and Social Sciences, and bringing together a unique blend of internationally well-connected scholars. We prioritise theoretically-grounded research on real-world issues with a strong focus on impact and which has synergies with our existing strengths, both within and across our disciplines. This is reflected in the remit of the four LSS research centres:

- Founded in 2009, the [Aston Centre for Europe \(ACE\)](#) brings together the University's and School's strengths in European Studies (broadly defined). Based primarily within the School's Politics and International Relations (PIR) subject group, ACE's purpose is to raise the University's profile on Europe at local, national and international level. To this end, it hosts high-profile visiting speakers, offers practitioner training, as well as running innovative MA programmes, and facilitates new research across the University. Its co-directors are Professor John Gaffney, Dr Carolyn Rowe and Professor David Bailey (Aston Business School).
- The [Centre for Critical Inquiry into Society and Culture \(CCISC\)](#) is an inter-disciplinary research centre that brings together academics and practitioners working within English language and linguistics, modern languages, translation studies, sociology, social and public policy, politics and psychology. It aims to create a bridge between research, policy, and professional practice and facilitate inventive inter-disciplinary research which contributes to public understanding of major social issues. It scrutinizes the evidence base for policy and practice, and expands the policy options under debate. It emphasises partnership and engagement with local communities, policymakers and businesses as both co-producers and users of knowledge, working with practitioners offering practical solutions for national and local government, service-providers and employers. CCISC researchers are engaged in work that will shape future thinking

and pioneer practices that will have a significant impact on society and organisations in ways that promote equality, inclusivity, and social justice. CCISC is led by Dr Gary Fooks and Dr Marcello Giovanelli.

- The [Centre for Forensic Linguistics \(CFL\)](#) at Aston is the first of its type in the world. It combines leading-edge research and investigative forensic practice with postgraduate teaching and professional courses. Research within the Centre involves all aspects of forensic linguistics, from how the police and the courts can best work with interpreters to the development and refinement of methods for identifying writers of disputed forensic texts. Members of the Centre have published widely and lectured on their research in some 30 countries. Their high-quality research ensures that both postgraduate and professional courses and their investigative work have a solid academic foundation. CFL is led by Professor Tim Grant.
- The [Centre for Language Research at Aston \(CLaRA\)](#) was launched in 2011 and is an inter-disciplinary research centre that brings together academics and practitioners working within English Language and Linguistics, Modern languages and Translation Studies. It aims to build on Aston's longstanding expertise in research into language education, modern foreign languages, applied and sociolinguistics by promoting interdisciplinary collaboration and establishing national and international networks and partnerships. Research within CLaRA focuses on translation studies, multilingualism and language contact, language policy, corpus linguistics, first and second language learning and teaching, language teacher education, and language education for professional and intercultural communication, language and culture. CLaRA provides an annual programme of seminars, workshops and conferences and delivers a language related programme of events to the university's continuous personal development programmes. CLaRA is led by Dr Sue Garton and Dr Emmanuelle Labeau.



For the Research Excellence Framework (REF2014), LSS submitted to two panels – ‘Area Studies’ and ‘Modern Languages and Linguistics’. As a whole, [Aston University ranked 35th in the Times Higher Education rankings](#), with an impressive 78 per cent of research judged to be ‘internationally excellent’ or ‘world leading’ (3*/4*). In terms of 3*/4* in impact, and excluding specialist institutions, Aston ranks 15th nationally.

Within LSS, our submissions achieved some outstanding successes:

Area Studies:

- 81% of the LSS submission has been judged as “world leading or internationally excellent”. This is the 3rd highest percentage in the UK for this unit of assessment.

- In terms of Grade Point Average, Area Studies at Aston is ranked 5th out of 23 institutions in the UK in the Times Higher Education REF 2014 rankings.

Modern Languages and Linguistics:

- 60% of the LSS submission was awarded the highest marks (4*) for **research impact**. This is the highest 4* percentage in the West Midlands, and places Aston within the top 10 for this unit of assessment regarding impact.
- 100% of the LSS submission to this panel has been awarded 4* or 3* for **research environment**, ranking Aston joint 1st in the UK for this measure

Compared to RAE 2008, the results for both submissions show a dramatic increase of 3* and 4* rated research as well as excellent results for research environment and impact. The highly positive assessment of LSS' research environment in the REF 2014 results reflects a thriving research culture, with regular high profile research seminars, workshops and conferences organized by the four LSS research centres, a lively community of PhD students and a steep increase in research grants won by the School. The latter is facilitated by an annual grant-writing workshop for new researchers and by the University's research support team, including a dedicated Research Development Manager who provides one-to-one support to colleagues, advising on research funding opportunities and grant applications.

In recent years, academics in the School have secured research awards from Horizon 2020, the ESRC, the Leverhulme Trust, the German Academic Exchange Service (DAAD) and the British Academy. In 2017-18, new research awards exceeded £1m.

Researchers in the School are internationally-recognised leaders in their respective fields; they regularly appear in the national and international media, thereby underlining the strong impact of our research which was also recognised in our REF submission. This activity is supported by university structures such as Aston's Press and Marketing Team which assists LSS staff in disseminating their research as widely as possible.

Our doctoral community has also continued to grow, and we now have over 30 FTE registered PhD students across the four subject areas. From 2017-18, we are part of the [Midlands Graduate School ESRC Doctoral Training Partnership](#), together with the Universities of Birmingham, Leicester, Loughborough, Nottingham and Warwick; within this, Aston is leading the Area Studies pathway. Our graduate students play a central role in the research culture of the School, organising an annual Postgraduate Conference which provides an opportunity for doctoral students to present their work to fellow researchers. LSS offers a number of bursaries each year for new research students and supports all of its doctoral students through an annual sum from the School for conference travel.

Additionally, the School has a strategic priority to develop deeper research links with prestigious overseas institutions. To this end, we have in 2017 established a partnership with the Faculty of Arts at the University of Auckland, which will see two academics from each University spending around three months at the other institution, with the objective of joint publications and research applications. The School supports such exchanges financially. The first colleagues from Aston are travelling to Auckland during 2017-18, with the first return visit expected in 2018-19.

Planning is well underway for REF 2021, for which we are expecting to make a new submission to Sociology alongside submissions to Area Studies and Modern Languages and Linguistics. This includes:

- A structured annual process of output review by UoA
- The School has particular focus on research impact; we are collecting a number of high-quality case studies
- Clear mentoring structures, including a timetabled research day per week and an active programme of research leave and additional support for colleagues who are preparing large grants

- An annual research allowance of £1,000 in 2017-18, or a £5,000 research start-up fund for colleagues taking up their appointment to a Lecturer role
- The University also funds a Distinguished Visitors scheme to enable research collaborators from abroad to come and visit Aston

Overall, the School's ambition is to double its overall 'research power' in REF 2021 compared to REF 2014. Lastly, Professor Simon Green (Area Studies), Professor Phil Mizen (Sociology) and Professor Gertrud Reershemius (Modern Languages and Linguistics) have been appointed to serve on REF sub-panels.

LEARNING AND TEACHING

The School offers a focused set of undergraduate and postgraduate degree programmes, which are structured around the four Departments. We see teaching and research as complementary and believe that excellence in one can best be achieved through excellence in the other. Our goal is to provide intellectually challenging and professionally relevant education, informing and innovating in our responses to social and cultural change. In the context of the new fees environment, our staff are committed to offering a dynamic, responsive and above all inspirational learning and teaching environment, which will help to prepare our students as global citizens for their future careers, whatever form these might take.

Undergraduate programmes

Undergraduate provision, for which the University received Gold in the 2017 Teaching Excellence Framework (TEF), remains at the heart of the School's teaching provision and we have grown strongly in this area over recent years: our intake more than doubled between 2009-10 and 2014-15 and in 2016, we admitted over 440 students, with a typical offer of BBB-ABB. The School's recruitment foundations are therefore robust and this gives us confidence to act and plan in an otherwise volatile environment.

We offer a range of four-year BSc Honours degrees in each of the Academic Subject Groups; we also offer a variety of combinations both within the School and between LSS and other areas of the University, notably Aston Business School. We are also actively developing and expanding our portfolio of programmes. Each programme incorporates an integrated placement year/Year Abroad; this is one of Aston's most distinctive features and a key driver behind the University's high rates of employability.

Full details of the School's provision at undergraduate level are available at:

<http://www1.aston.ac.uk/lss/undergraduate/>

University-wide Language Programme (UWLP) / Languages for All: Language modules are offered across the University to non-specialists, whether staff or students, as accredited electives or open learning opportunities. The language may be studied at ab initio or at Intermediate or Post 'A' level standard. Students may take these modules on a self-financing basis in cases where their specific degree programme does not include this opportunity. Languages on offer include: Arabic, French, German, Japanese, Mandarin, Portuguese and Spanish.

In addition, from 2012-13, the University has offered all first year students a free year of language learning as part of the University's goal of creating 'global citizens', under the auspices of the 'Languages for All' programme. This new initiative has been enthusiastically taken up by new students and is rapidly emerging as a key institutional kitemark which is resonating strongly with potential applicants. The Director of UWLP and Languages for All is Ms Aurélia Robert.

Postgraduate programmes:

MA/MSc Taught Programmes

Following a period of significant growth, the School admits around 100 postgraduate students annually to its 17 taught programmes, with delivery either on campus or, in some cases, by distance learning. The MA/ MSc programmes are growing in reach and reputation (see <http://www1.aston.ac.uk/lss/postgraduate/> for details):

- English Language runs a range of MA programmes in the area of Applied Linguistics, TESOL and Forensic Linguistics.
- The MA Translation in a European Context is officially recognised by the European Commission through its membership of the European Masters in Translation (EMT) network.
- Politics and International Relations has also expanded its portfolio of programmes, to include stand-alone MAs on the EU and on International Relations. The group also runs an innovative Double MA Europe and the World (run jointly with IEP Lille), as well as partnerships with IEP Rennes and the University of Bamberg.
- Sociology and Policy has recently introduced new MA programmes on Social Research and Social Change.

FACILITIES

In addition to the main University Library, the School provides local study facilities for students. A learning support team is on hand to support and advise staff and students, to manage specialist equipment as well as our growing archive of learning materials, and provide training for teaching and research software (SPSS, NVIVO). Academic staff are encouraged to use Aston Replay, which allows students to access lectures outside the classroom. The University uses Blackboard as its VLE.

All LSS computer laboratories have been upgraded and refurbished over recent years to provide a technically advanced, supportive learning environment. For language tuition, we use the latest Sanako software to manage face to face learning in the labs, including Interpreting. Our specific translation software includes the translation memory system TRADOS. There is also a separate group viewing room for films and broadcasts. Colleagues benefit from the work of the Aston University Centre for Learning, Innovation and Professional Practice (CLIPP), making use of CLIPP expertise in the use of centrally-managed, technology-enhanced learning resources, curriculum design and pedagogical research. CLIPP also includes the Centre for English Language and Communication at Aston (CELCA), which provides English for Academic Purposes (EAP) training across the institution to overseas students.

English and French Departments

You will contribute to the teaching and research environment in the English Department and the Department of Languages and Translation Studies (LTS/French). The two departments will submit jointly to the UoA Modern Languages and Linguistics in REF2021 and are currently expanding their provision. From September 2017, English included an undergraduate programme in English Literature to complement the existing undergraduate programmes in English Language. Current areas of teaching and research specialisms in English are: Corpus Linguistics, Discourse Analysis, Forensic Linguistics; Identity and Dialectology, Language and Literacy Education, Cognitive/Literary Linguistics, Popular Fiction, Sociolinguistics and TESOL. Languages and Translation Studies have added History to their portfolio from September 2018 and have established specialisms in linguistics, European cultures and literatures, politics and area studies, as well as International Business and Modern Languages (BSc IBML).

Our research is closely linked to the work conducted in the four LSS research centres (see above). Colleagues specialising in Forensic Linguistics have their own dedicated Centre for Forensic Linguistics. Colleagues who research in Sociolinguistics, Identity and Dialectology, Language and Literature in Education, Cognitive/Literary Linguistics and Popular Fiction are attached to the Centre for Critical Inquiry into Society and Culture (CCISC);

colleagues specializing in corpus linguistics, comparative language and literature and TESOL belong to the Centre for Language Research at Aston (CLaRA).

We are proud of the applied focus of our research and teaching. We share our knowledge in English with practitioners: the police, business leaders, teachers and members of the local community. Colleagues in LTS are very active promoting the study of foreign languages in the community and beyond. Most of all we aim to inspire our students so that they share our enthusiasm for exploring languages in the real world. The English Literature programme is an innovative one that shares this applied focus. It offers students the opportunity to study across literary periods and genres and to make exciting and enabling connections between literary study, linguistics, creative writing and the study of culture and reading practices in general. The new History programme has a focus on digital history. The post is therefore strategically important to develop our portfolio in Digital Humanities. There is a strong emphasis on the development of applied knowledge and critical skills to support further study and employability.

This post is an exciting opportunity to develop Corpus Linguistics across two departments: English and Modern Languages and Translation Studies (French), and to shape future research directions in Corpus Linguistics.

Some of our aims:

- ▶ Develop our research profile and outputs so that we are recognised as one of the UK's leading centres for scholarship and academic research in Corpus Linguistics.
- ▶ Establish a distinctive identity for Aston, working towards a cross-disciplinary expansion of Digital Humanities.
- ▶ Continue to share our research findings and to meet the academic and professional training needs of practitioners and members of local, national and international communities.
- ▶ Exploit synergies with other areas of the School of Languages and Social Sciences and the wider University.
- ▶ Offer well-targeted, high-quality, and distinctive UG and PG programmes to our students that continue to receive top ratings.
- ▶ Increase the number of on-campus PhD students within our field, and to provide a vibrant research community within which they can study and thrive.

Current Staff:

Mrs Céline Benoit: Teaching Associate in French: education, sociology, business

Dr Abigail Boucher: Lecturer in English Literature: literature of the long nineteenth century; genre and popular fiction; class studies; and medicine and science in literature.

Dr Elisabeth Barakos: Lecturer in English Language: Intercultural communication; Business, leadership and management communication; Discourse Analysis; Language Policy.

Prof Urszula Clark: Professor of English and Linguistics: Identity and Dialectology; Literacy in Education; Discourse Analysis; Research Methods.

Dr Erika Darics: Lecturer in English Language: Digital communication; Intercultural communication; Business, leadership and management communication; Discourse Analysis.

Dr Sue Garton: Reader in English Language: TESOL; Approaches to Course and Materials; Computer-Mediated Communication; Research Methods.

Dr Marcello Giovanelli: Senior Lecturer in English Language and Literature: Literary Linguistics; Cognitive Poetics; Pedagogical Stylistics; Language and Literature in Education.

Prof Tim Grant: Professor of Forensic Linguistics: Sociolinguistics; Discourse Analysis; Forensic Linguistics; Psychology of Language and Communication; Research methods.

Dr Chloe Harrison: Lecturer in English Language and Literature: Literary Linguistics; Cognitive Poetics

Dr Kate Haworth: Lecturer in English Language: Sociolinguistics, Discourse Analysis, Forensic Linguistics, Research methods.

Dr Krzysztof Kredens: Lecturer in English Language: Sociolinguistics; Phonetics and Phonology; Discourse Analysis; Forensic Linguistics.

Dr Emmanuelle Labeau: Senior Lecturer in French: Tense, aspect and modality; history of French; French in Belgium

Dr Nur Hooton: Lecturer in English Language: TESOL; Course and materials design; Computer mediated communication; teacher learning and change.

Dr Carol Marley: Senior Lecturer in English Language: Sociolinguistics; Discourse Analysis; Media discourse; Language and Gender.

Dr Muna Morris-Adams: Lecturer in English Language: TESOL; Academic Language Skills; Spoken discourse analysis.

Dr Geoff Morrison: Reader in Forensic Speech Science: Forensic speech science; Forensic inference and statistics.

Dr Nathalie Mrgudovic: Teaching Fellow in French: French politics and area studies, France d'outre mer

Dr Nathan Page: Lecturer in English Language: TESOL; Discourse analysis.

Prof Gertrud Reershemius: Professor of Linguistics and Language Contact: Language and Globalisation; Advanced methods in sociolinguistics; Computer mediated communication.

Mrs Aurelia Robert: Teaching Associate in French: language and area studies, director of Languages of All

Dr Brian Sudlow: Lecturer in French and Translation Studies: French culture, philosophy and history



Aston University
Employable Graduates
Exploitable Research

Aston University
Birmingham B4 7ET
www.aston.ac.uk

